



RCBS

PRECISIONEERED[®]
Uniflow Powder Measure
Instructions



Sporting Equipment Division

Write for our Catalog

Loaded with photos and drawings in brilliant full color. Shows complete line of CCI, SPEER and RCBS products; lists prices, reloading dies for over 300 calibers, reference tables, and a heap of other interesting information. Most informative and most descriptive handloading catalog available anywhere. Please enclose \$1.00 for postage and handling.

RCBS, P.O. BOX 1919, OROVILLE, CALIFORNIA 95965

The RCBS Uniflow Powder Measure

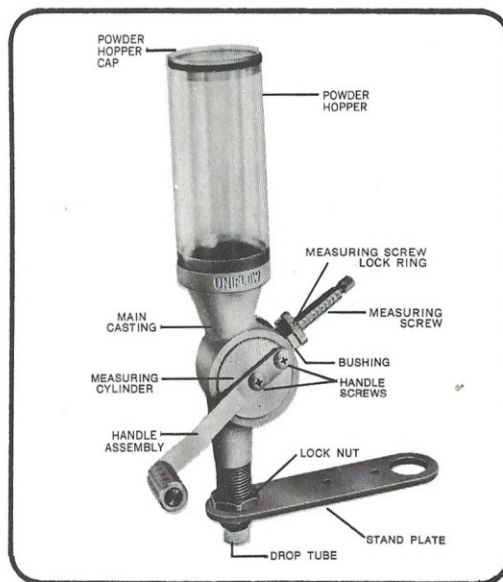
Throws consistently accurate volume charges load after load!

Your RCBS Uniflow Powder Measure will perform two powder charging tasks in one fast, simple operation. With each turn of the handle it accurately measures powder — within a fraction of a grain — and swiftly dispenses it into cases, one after another. Powder pours uniformly from the Powder Hopper into the Measuring Cylinder, through the Drop Tube and into the Case. This eliminates the hazards of overloads caused by clogging when charges are dumped into cases. You can change from one charge to another quickly and easily with numbered Measuring Screw — which also serves as a reference for future charges.

Powder level is visible at all times through large capacity 5 inch plastic Powder Hopper — **which is filled by removing cap.**

Drop Tubes are designed to eliminate powder spills around case mouth. Exposed metal parts plated to eliminate rust.

Measuring Cylinders have precision-ground surfaces and slide into the honed Main Casting for precise fit. Lower portion of the Main Casting has the standard $\frac{7}{8}$ "-14 thread and may be used with the furnished Stand Plate or the optional RCBS Powder Measure Stand.



About Your RCBS® Uniflow Powder Measure

A Powder Measure is basically a device which measures powder by volume and not by weight. However, before you start throwing a given charge with your Powder Measure, the first charge must always be weighed on a powder scale to arrive at the charge desired. Accurate Powder Measure charges will also depend upon (1) the size and uniformity of the powder kernels used, and (2) how smoothly and uniformly you operate the powder measure handle.

Powders like H-380, H-450, 4320, Ball, and most pistol powders will measure very evenly. Some long kernel powders like 4350, 4831, and 4895 are more difficult to measure consistently, and it is imperative that you follow a set routine when throwing charges of these powders.

(The following paragraph, of interest to bench rest shooters, may be too complex for others)

It is interesting to note that in a .30-06 size and type cartridge a variation of one grain of 4350 or 4831 powder only means a difference of $\frac{3}{4}$ " in group size or point of impact at 300 yards. For this reason we believe it is best to carefully and consistently throw the charges by volume rather than worry about exact even-weight charges!

Occasionally your Powder Measure may not meter (measure out) powder evenly, due to the condition of the powder. In this case try the following procedure: Take the cap off the powder can and place the can under a desk lamp containing a 100-watt bulb for about two hours. The light will gently warm the powder, re-distributing the chemical makeup of the powder and drawing out any moisture which may be causing the problem. Normally the Powder Measure will now throw more consistent charges. If a Measure still fails to throw consistently even charges, it is an indication of uneven powder kernels. To overcome this, rotate the powder container several times before filling Powder Measure hopper.

TO ASSEMBLE:

To prepare your RCBS Uniflow Powder Measure for use, first attach the Handle by removing the two Handle Screws from the side of the Measuring Cylinder. Insert screws through the Handle and attach to the Measuring Cylinder with Handle facing toward the front. Then screw the Stand Plate to the bottom of the Powder Measure and lock in place with the Lock Nut. The Stand Plate can be mounted on a bench using wood screws; or it can be mounted on the left or right side of your reloading press and firmly held in place under the lock ring of a reloading die. Optional Powder Measure

Stand shown in this folder is available from your gun dealer.

Both large and small Measuring Cylinders are available for your RCBS Uniflow Powder Measure. The large Measuring Cylinder may be used for all rifle and pistol powders. However, we do recommend the small Measuring Cylinder for small pistol charges and small bore rifle powders. Two Drop Tubes are also furnished; one with a small hole for .22 to 7mm calibers, and one with a large hole for .30 caliber on up. Optional .17 caliber Drop Tube is available from your dealer.

If your Measure was not purchased with large and small Measuring Cylinder Assemblies, you may purchase either size separately from your dealer. It is not necessary to return your Measure to the factory for fitting of the Measuring Cylinder Assembly; however, if you do, there will be a service charge of \$3 to cover the cost of handling, invoicing, and return postage will be made in addition to the cost of the Assembly.

Your RCBS Measuring Cylinder was dipped in a rust preventative before assembly, and must be wiped dry before using. If you feel a lubricant is necessary between the Measuring Cylinder and Main Casting, use a lubricant in powder form, such as "Molykote" Type Z. NEVER USE GREASE TYPE LUBRICANTS in your RCBS Uniflow Powder Measure.

OPERATING YOUR POWDER MEASURE:

Before attempting to throw a series of powder charges, set your Powder Measure for the maximum charge and run about a pound of powder through it. This will deposit a film on the inside of the Measure and help the powder flow through more evenly and consistently. And remember:

DON'T SMOKE WHILE HANDLING POWDER!

Be sure you use the same uniform movements for each powder charge. To throw a charge raise the Handle until it comes to the end of the stroke with a light tap; lower handle in the same manner. This tap at the end of each stroke helps to settle the powder uniformly in the Measure.

SETTING YOUR POWDER MEASURE

Remember a Powder Measure is not a weighing device — it is a volume metering device.

A dependable powder scale should be used to set the first charges in your Powder Measure as follows: Throw a powder charge directly into the scale pan by raising the

handle and lowering it. Weigh the charge. If it is too heavy, adjust the Measuring Screw — with the handle in the down position — to a lower number. If the charge is too light, adjust the Measuring Screw to a higher number. When you arrive at the exact charge you need, secure the Measure Screw with the Lock Ring and you're ready to throw a series of charges. Write down the approximate number setting showing above the Lock Ring to save time when weighing and setting future charges. As a precaution, throw every 10th charge into the scale pan and weigh it to be sure of consistency. Your RCBS Uniflow Powder Measure is adjustable from 2 grains of Bullseye to 110 grains of 4350.

CAUTION: The Measuring Screw is not a Micrometer and should not be used as such.

It is not necessary to empty the Powder Hopper each time you change charges unless a different powder is required.

Powder should not be left in the Measure, as it will deteriorate and may clog and jam the Measuring Cylinder, and etch Powder Hopper. The Measure can be emptied without taking it off the bench or reloading press by setting the Measuring Screw for the maximum charge and throwing charges until the Powder Hopper is empty.

TO CHANGE OR REMOVE CYLINDERS:(SEE DRAWING)

Do not attempt to remove Powder Hopper from Main Casting as damage may result.

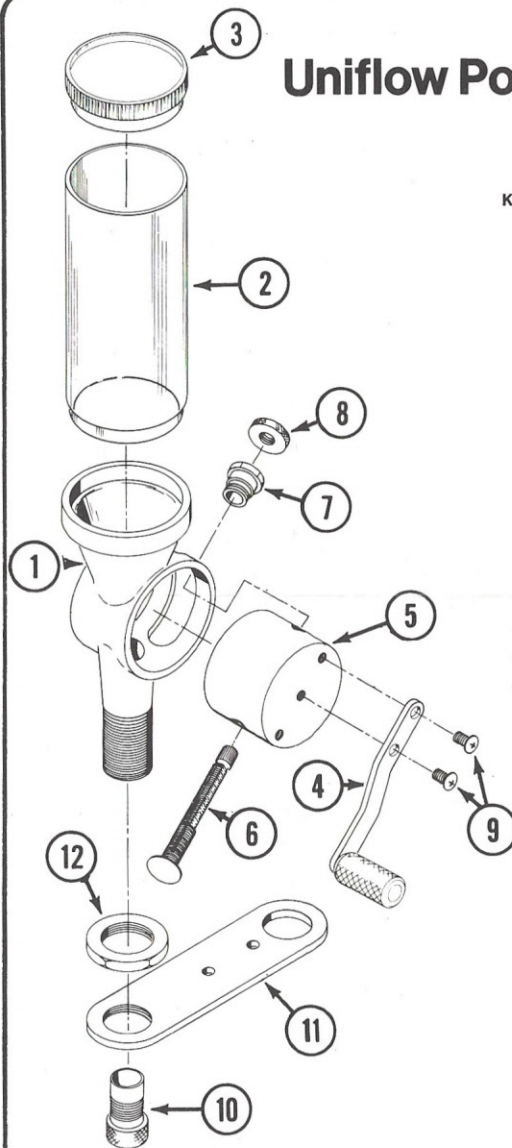
To change Measuring Cylinders, or to remove for cleaning, first remove the Measuring Screw Lock Ring. Next, using a wrench unscrew the Measuring Screw Bushing. Then, with the Handle in the "up" position, push the Measuring Screw through the Measuring Cylinder and out through the top of the Powder Measure. Remove Measuring Cylinder from Main Casting. DO NOT TRY TO FORCE THE MEASURING SCREW THROUGH THE SLOT IN THE MAIN CASTING.

When installing the Measuring Cylinder, make sure the Cylinder Measuring Chamber is facing upward before you slide it into the Main Casting. Then, insert the Measuring Screw — numbered end first — through the top of the Measure, and push it all the way down into the Cylinder Measuring Chamber. Screw the Bushing onto the Measuring Screw and lock in place with a wrench. Replace the Measuring Screw Lock Ring — and your RCBS Uniflow Powder Measure is ready for use.

Uniflow Powder Measure Parts List

KEY PART NO. DESCRIPTION

| | | |
|----|-------|------------------------------------|
| 1 | 09025 | Main Casting |
| 2 | 09026 | Powder Hopper |
| 3 | 09012 | Powder Hopper Cap |
| 4 | 09015 | Handle Assembly |
| * | 09003 | Measuring Cylinder Assembly, Large |
| * | 09004 | Measuring Cylinder Assembly, Small |
| 5 | 09005 | Measuring Cylinder, Large |
| 5 | 09006 | Measuring Cylinder, Small |
| 6 | 09007 | Measuring Screw, Large |
| 6 | 09008 | Measuring Screw, Small |
| 7 | 09013 | Measuring Cylinder Bushing |
| 8 | 09014 | Measuring Screw Lock Ring |
| 9 | 09019 | Handle Screw (2) |
| 10 | 09022 | Drop Tube, Large |
| 10 | 09023 | Drop Tube, Small |
| 10 | 09028 | Drop Tube, .17 Caliber |
| 11 | 09020 | Stand Plate |
| 12 | 09021 | Hex Lock Nut, 7/8"-14 |



*Measuring Cylinder Assembly consists of Measuring Cylinder and Measuring Screw.

Prices & Specifications Subject to Change.

RCBS Powder Measure Stand

The perfect accessory for your Powder Measure. Raises Powder Measure to proper working height. Leaves plenty of space for positioning Powder Scale or cases in loading block underneath Powder Measure drop tube. Easily bolted to loading bench with standard $\frac{7}{8}$ "-14 thread. Green crackle finish matches your RCBS Powder Measure.



We're Old Hands at Handloading

CCI

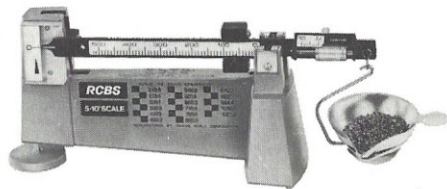
SPEER

RCBS

Sporting Equipment
Division



RCBS Model 5-10 Scale



Features micrometer poise to give fast, accurate weighing of powder charges for setting your Uniflow Powder Measure. Weighs from $\frac{1}{10}$ th to 510 grains — powder or bullets. Large, easy-to-read graduations, magnetic damper, and anti-tip pan hanger. Now — also available with metric readings.